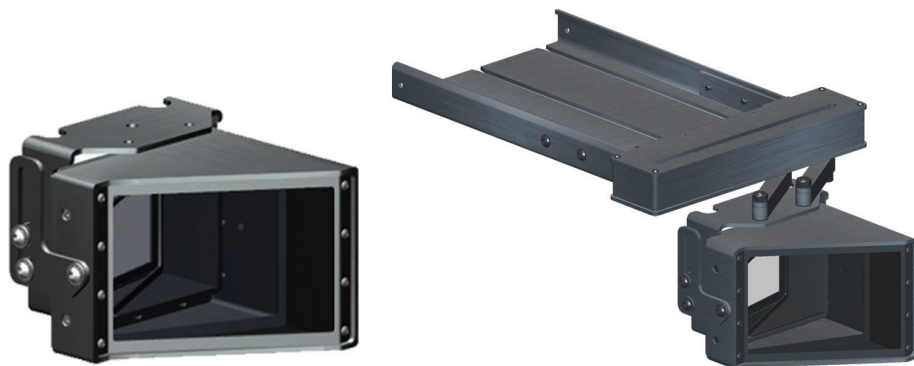


# PERFORMANCE. VALUE. IMMERSION.



## OVERVIEW

The CineVista Lens is an anamorphic, horizontal expansion lens sold in a fixed configuration – the lens stays in front of the projector lens at all times. Projector scaling modes are used to adjust the image for Movie vs TV viewing.

The CineVista Lens can be ordered alone, just the lens and bracket, or as the CineVista Lens System which includes the CineVista Lens, Bracket and Lens Mount. Projector and projector mount (if needed) must be supplied separately. The CineVista Lens Mount is designed to work with the Chief RPAU or OmniMount 3N1-PJT projector ceiling mounts, or can be shelf mounted.

<p><b>CINEVISTA LENS (INCLUDES BRACKET)</b>  <b>MODEL: CVL</b>  <b>MSRP: \$1195</b></p>	<p><b>CINEVISTA LENS &amp; MOUNT</b>  <b>MODEL: CVLM</b>  <b>MSRP: \$1495</b></p>	<p><b>CINEVISTA MOUNT (ALONE)</b>  <b>MODEL: CVM</b>  <b>MSRP: \$425</b></p>
---	---	--

## FEATURES

- Multi-optic lens, in a stylish brushed black aluminum housing with a mat black non-reflective interior
- Produces exceptional image quality up to and beyond 1080p resolution
- Precision ground, polished and coated glass elements
- Improves image brightness by over 33% compared to a standard letterboxed image
- Compatible with 3D technology

## SPECIFICATIONS

CineVista Lens	
Height	4.0 in (10.2cm)
Length	5.4 in (13.7cm)
Width	5.0 in (12.7cm)
Weight	4.2 lb (1.9kg)
Color	Brushed Black Aluminum

Dimensions and weights are estimated

CineVista Mount	
Height	2.5 in (6.4cm)
Length	14.25 in (36.2cm)
Width	9.0 in (22.9cm)
Weight	5 lbs (2.3kg)
Color	Brushed Black Aluminum

Dimensions and weights are estimated